

HIV/AIDS Mapping, Central Asian Republics

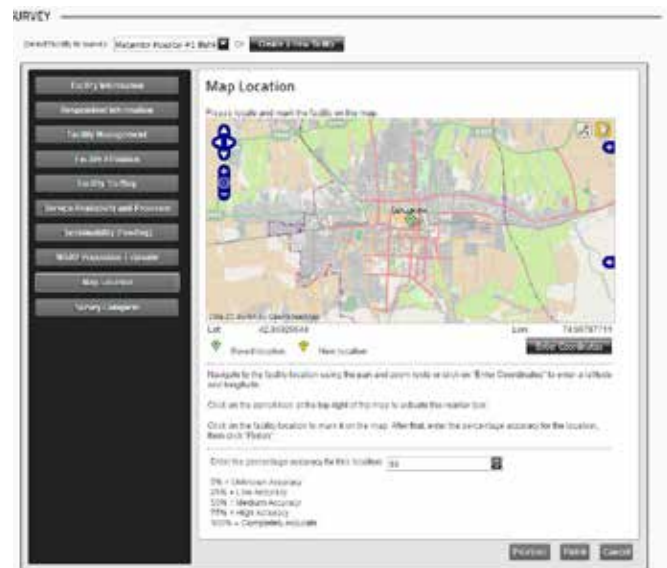
RTI International’s expertise in designing geospatial databases provided a valuable resource for enhancing the level of HIV/AIDS treatment and prevention within Central Asia. The Centers for Disease Control and Prevention (CDC) and the region’s Ministries of Health needed accurate facility locations for coordination and planning purposes. The lack of a centralized database of programs and locations had led to the inability to sufficiently treat HIV/AIDS within the region’s populations. The HIV/AIDS Mapping, Central Asian Republics project identified and mapped HIV/AIDS treatment and prevention facilities across Kazakhstan, Kyrgyzstan, and Tajikistan.

Background

The Ministries of Health in the Central Asian Republics of Kazakhstan, Kyrgyzstan, and Tajikistan, in collaboration with CDC, turned to RTI for technical assistance to develop a strategy for improving the delivery of comprehensive HIV/AIDS prevention, care, and treatment services for most-at-risk populations. RTI created a comprehensive, geospatially enabled database of HIV/AIDS treatment and prevention facilities, which provided a clearer understanding of the level and distribution of health care facilities within the region. This database can be updated to keep pace with changes and developments in HIV/AIDS treatments in Central Asia. Maps generated in conjunction with the database depict facility locations and provide CDC and the Health Ministries with a more accurate picture of treatment and prevention capabilities.

Approach

Health care facility data were collected using a web-based data collection tool and telephone interviews with treatment providers. The web-based questionnaire was geospatially enabled and allowed data collectors to select a location on a map to save the facility’s latitude and longitude. In each country, RTI teamed with partners who used their local knowledge and health care–sector relationships to enhance data collection activities and contact individual facilities. During the collection of geospatial data, the teams also collected information such as funding source, populations treated, staffing levels, and treatment programs offered. The resulting database allows



Interface of RTI’s web-based, spatially enabled, data collection tool.

for geospatial analyses that can identify areas with limited prevention and treatment coverage and can aid policy development to improve the region’s health care services. The tool itself and the maps were presented in both Russian and English.

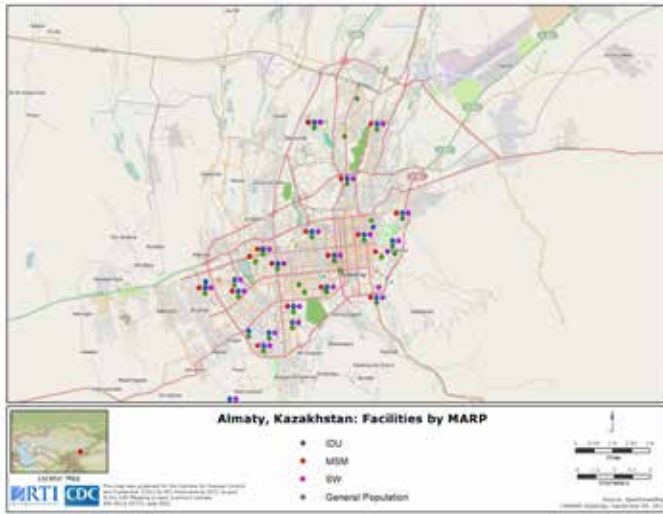
Highlights

The HIV/AIDS mapping project has

- Provided a comprehensive updatable database
- Established coordination between agencies and service providers within regions, countries, and localities

HIV/AIDS Mapping, Central Asian Republics

- Identified areas where gaps in treatment and services exist
- Provided information to support decisions on most efficient use of resources
- Provided the ability to offer online facility information to government agencies, administrators, providers, and patients.



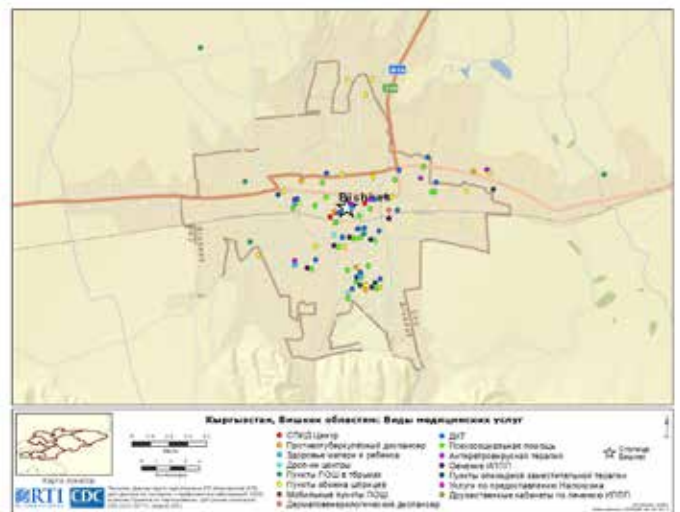
Map showing facilities by most-at-risk populations in Almaty, Kazakhstan.

Results

The project contacted and located 536 facilities and coded each one by types of services provided and most-at-risk populations served. Of those, 244 were in Kazakhstan, 184 were in Kyrgyzstan, and 108 were in Tajikistan. Facility-specific data were represented in maps produced for CDC. For each of the three countries, an atlas was produced that included maps for oblasts (second-level administrative regions), rayons (third-level administrative regions), and significant cities showing facilities by the most-at-risk populations served. The geospatial database has provided a valuable resource for enhancing the level of HIV/AIDS treatment and prevention within Central Asia.



Map showing facilities serving intravenous drug users in Kazakhstan.



Map (in Russian) showing facilities by type of service provided in Bishkek, Kyrgyzstan.

More Information

Justine Allpress
Research GIS Analyst/Programmer
919.485.5688
jla@rti.org

RTI International
3040 E. Cornwallis Road, PO Box 12194
Research Triangle Park, NC 27709-2194 USA

RTI 8568 R2 1117



RTI International is an independent, nonprofit research institute dedicated to improving the human condition. Clients rely on us to answer questions that demand an objective and multidisciplinary approach—one that integrates expertise across the social and laboratory sciences, engineering, and international development. We believe in the promise of science, and we are inspired every day to deliver on that promise for the good of people, communities, and businesses around the world. For more information, visit www.rti.org.

RTI International is a registered trademark and a trade name of Research Triangle Institute.
The RTI logo is a registered trademark of Research Triangle Institute.

