

The Evaluation Engine:

A REVOLUTIONARY NEW TOOL FOR MEASURING STUDENT GROWTH.

In today's world, data is driving instructional decisions in the classroom and in state departments of education. As a result, educators are increasingly expected to conduct time-consuming and costly impact evaluations. To make impact evaluation easier, less costly, and more rigorous, a coalition of researchers from **RTI International**, the **University of Michigan**, and the **Bill & Melinda Gates Foundation** has created the Evaluation Engine. Let's take a look at what this tool can do for states and schools.

WHAT IS THE EVALUATION ENGINE?



1

An inexpensive and easy tool for serious measurement of educational impact

2

A way to empower partner researchers with data, without compromising privacy

HOW DOES IT WORK?

Users design studies simply by identifying students participating in a program of interest. The clear, efficient, web-based interface collects basic information about students in the treatment group.

THE COMPUTER DOES THE REST



**IT CREATES AN
APPROPRIATE
COMPARISON
GROUP**



**IT PERFORMS
STATISTICAL
TESTING**



**IT GENERATES
RESULTS**

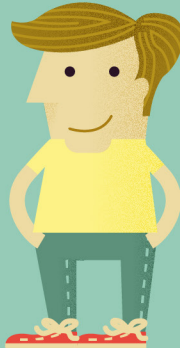


**IT PRODUCES A
FULL-COLOR PDF
REPORT EXPLAINING
THE FINDINGS**

STUDENTS ARE MATCHED TO SIMILAR STUDENTS BASED ON IMPORTANT FACTORS



STUDENT DEMOGRAPHIC SUBGROUPS



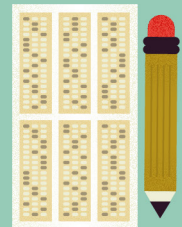
STUDENT GRADE LEVELS



SCHOOL-SPECIFIC INFORMATION

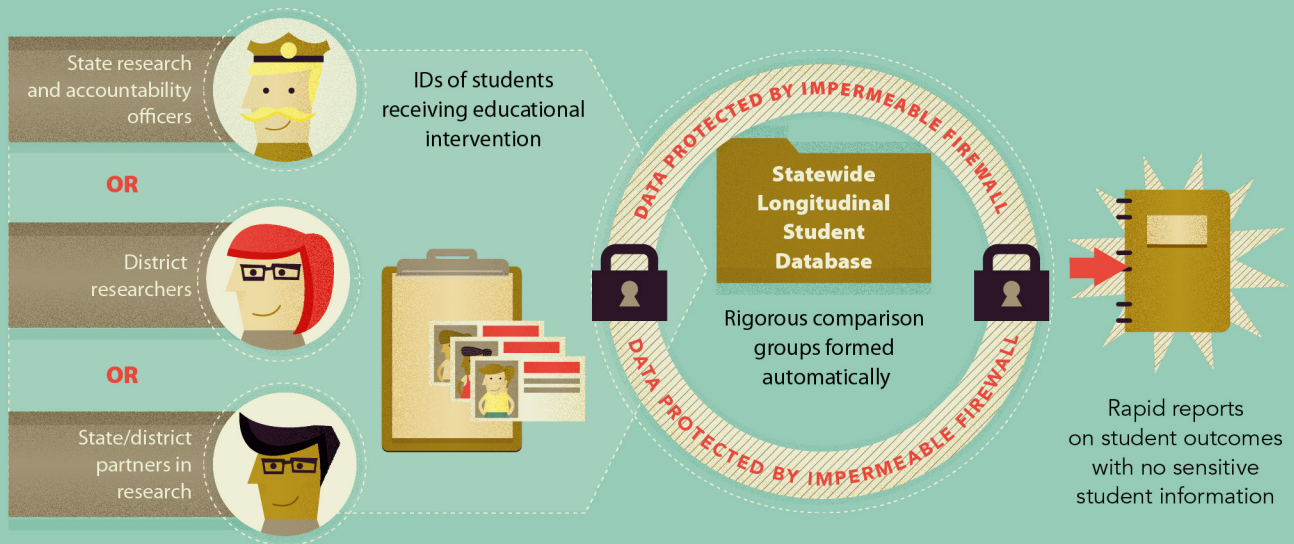


**AREA OF STUDY,
E.G. LANGUAGE
ARTS**



**SPECIFIC
STANDARDIZED
TESTING DATA**

WHO WINS?



HOW CAN STATES PARTICIPATE?

WE ARE CURRENTLY ACCEPTING APPLICATIONS FROM ADDITIONAL STATE PARTNERS.

REQUIRED FOR STATE INVOLVEMENT



1

Signing a data sharing agreement



2

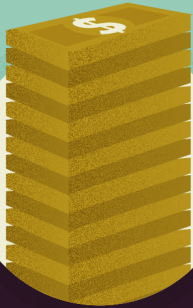
Providing an extract of selected data elements from your state longitudinal data system (SLDS) once a year



3

Assigning a liaison from the state to facilitate the partnership

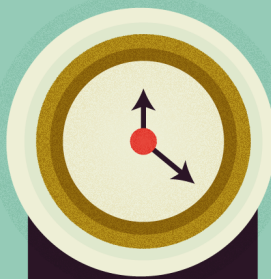
STATES THAT PARTICIPATE IN THE PROJECT WILL:



1

SAVE MONEY.

Your state spends tens of millions of dollars on impact research/evaluation: The Evaluation Engine can slash those costs dramatically



2

SAVE TIME.

Dramatically reduce the time and effort required to respond to data requests from funders and researchers



3

SEE CLEARLY.

See the difference between schools/programs that **SERVE** high-scoring students and schools/programs that **PRODUCE** high-scoring students



4

LEARN QUICKLY.

Receive impact reports in hours, not in months or years

CONTACT INFORMATION

David Silver

Principal Investigator

Director, **Center for Evaluation and the Study of Educational Equity**

202.974.7804

dsilver@rti.org

Roger Studley

Project Director

Senior Research Associate, **Center for P-12 Education**

510.665.8216

rstudley@rti.org



About RTI:

RTI International is one of the world's leading research institutes, dedicated to improving the human condition by turning knowledge into practice.

www.rti.org