

# Applied Market System Resilience Research & Learning

Market system resilience (MSR) is defined as the ability of a market system to respond to shocks and stresses in a proactive fashion to sustain inclusive market functions that serve vulnerable producers, business owners, workers and consumers. A market system is a dynamic space in which private and public actors collaborate, coordinate, and compete for the production, distribution, and consumption of goods and services. Applying USAID’s framework, we analyze the resilience of a market system across eight domains:



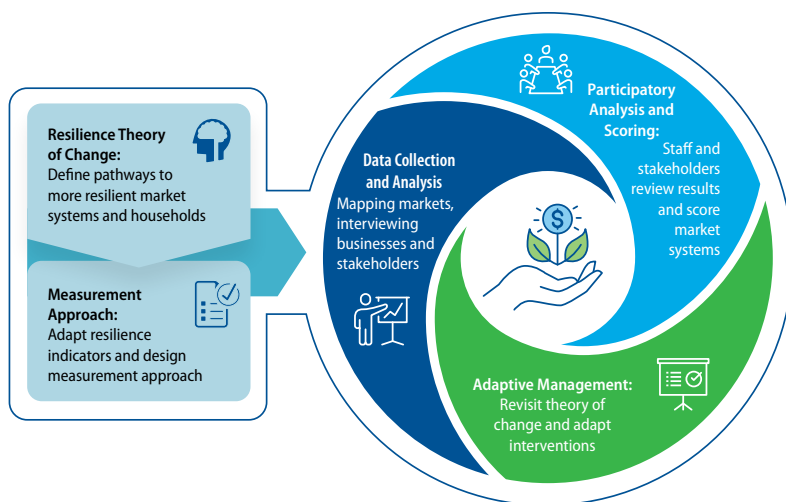
## MSR Participatory Research & Learning Approach

RTI International operationalizes USAID’s MSR Framework to assess market systems in developing countries. The approach uses a participatory process to contextualize resilience domains, select and adapt indicators, and refine measurement tools and approaches. RTI’s measurement approach finds new opportunities to strengthen system resilience by identifying systemic vulnerabilities and mapping development pathways that leverage the transformative potential of resilient market systems. The system resilience approach can be applied to many types of systems, ranging from agricultural, environmental, water, energy and health.

## Potential applications of RTI’s MSR approach

- Implement approach at baseline and end-line to evaluate project contributions to change over time in qualitative and quantitative indicators across eight domains
- Implement full approach once to strengthen/realign programming
- Use the resilience theory of change activity to prioritize indicators and measure outcomes through the project’s M&E activities

### MSR Measurement and Adaptive Management Approach



## Services using MSR Framework Tools



Developing resilience theories of change to guide and frame interventions



Designing evaluations using the MSR measurement approach



Assessing MSR through data collection and analysis



Hosting participatory workshops for analysis and scoring



Adjusting interventions and approaches through adaptive management

## Projects Using MSR Framework Tools

### USAID Somalia Growth, Enterprise, Employment, and Livelihoods (GEEL) (2015–2021)

With internal funding, RTI designed a facilitated locally led process to adapt the MSR framework to the context of South West State in Somalia, working with GEEL staff and local consultants. We developed a set of resilience-focused theories of change and measured quantitative and qualitative indicators of resilience in the livestock and grain markets, using a participatory scoring approach. Results contributed to program adaptations to strengthen GEEL's resilience interventions and approaches.

### Feed the Future Kenya Crops and Dairy Market Systems (KDCMS) (2017–2022)

RTI applied the MSR framework to identify critical systemic vulnerabilities and corresponding opportunities to strengthen market system resilience within the dairy and mango value chains supported by KCDMS activities. Through a complementary MSR evaluation, RTI assessed contribution of changes in market system resilience to KCDMS interventions, and links between the theory of change outcomes and improvements in systems-level change.

### USAID Poverty Reduced Sustainability in an Environment of Resilient and Vibrant Economy (PReSERVE), implemented by Food for the Hungry (2021–2026)

Laying the groundwork for MSR intervention design, RTI is conducting market system assessments and a household resilience baseline study to inform and refine the program's theory of change. RTI will assess linkages between MSR outcomes and household resilience capacities over the life of the project.

## Reports and Publications:

[Resilience of Somali Grain and Livestock Market Systems. Enterprise Development and Microfinance \(EDM\)](#). March 2022.

[USAID GEEL Resilience Challenge Fund: Learning Report](#). June 2021.

[Enterprise Resilience of Ethiopian Agro-Input Providers in Amhara and Oromia, Ethiopia](#). June 2022.

[Mango Market System Resilience in Eastern Kenya](#). December 2023.

[Dairy Market System Resilience in Eastern Kenya](#). December 2023.

## More about our work:

[Strengthening the self-reliance of Somalia's private sector](#)

[Strengthening Agricultural Market Systems in Kenya | RTI](#)

### For more information on our capabilities please contact:

Tracy Mitchell  
[tmitchell@rti.org](mailto:tmitchell@rti.org)

Joanna Springer  
[jspringer@rti.org](mailto:jspringer@rti.org)

### Learn more about our work

<https://www.rti.org/food-security>  
Follow @RTI\_INTL\_DEV

[www.rti.org/idg](http://www.rti.org/idg)

RTI International is an independent, nonprofit research institute dedicated to improving the human condition. Clients rely on us to answer questions that demand an objective and multidisciplinary approach—one that integrates expertise across the social and laboratory sciences, engineering, and international development. We believe in the promise of science, and we are inspired every day to deliver on that promise for the good of people, communities, and businesses around the world. For more information, visit [www.rti.org](http://www.rti.org).

RTI International is a trade name of Research Triangle Institute. RTI and the RTI logo are U.S. registered trademarks of Research Triangle Institute.  
RTI 14513 R1 0624